



PUTTERILLS

est. 1992



£950

St. Martins Road

Knebworth, SG3 6DD

PROPERTY SUMMARY

This bright one-bedroom first-floor maisonette forms part of a small and individual development of just ten properties built in the early 1990s close to the heart of the village with highly convenient access to the neighbouring high street and mainline rail link to London Kings Cross. Approached via its own front door with canopy porch, the property comprises: Entrance Hall with staircase to the first floor landing, lounge/dining room, fitted kitchen, spacious double bedroom with feature window and a white bathroom suite.

Gordon Court has residents parking and mature communal areas with established trees, bushes and shrubs.

Knebworth village provides a High Street with shops for daily needs. There is a chemist, post office, doctors' surgery, two dentists, Co-op general store, Indian restaurant, Chinese take away, two cafés, wine merchants & a well-regarded junior/mixed infant school. The mainline railway station with frequent service allows access to London Kings Cross in around 25 /35 minutes. There are five churches all linked through the Knebworth Family of Churches, a Golf club & a great recreation ground with tennis courts, a bowling green and a toddlers' play area.

The village is well placed for access to neighbouring towns and commuter links. The following distances are for guidance only: Stanstead Airport 28 miles—Luton Airport 13 miles—Heathrow Airport 39 miles—A1(m) 3.6 miles—Hertford 8.5 miles—St Albans 13 miles—M25 Jct23 14 miles.

1

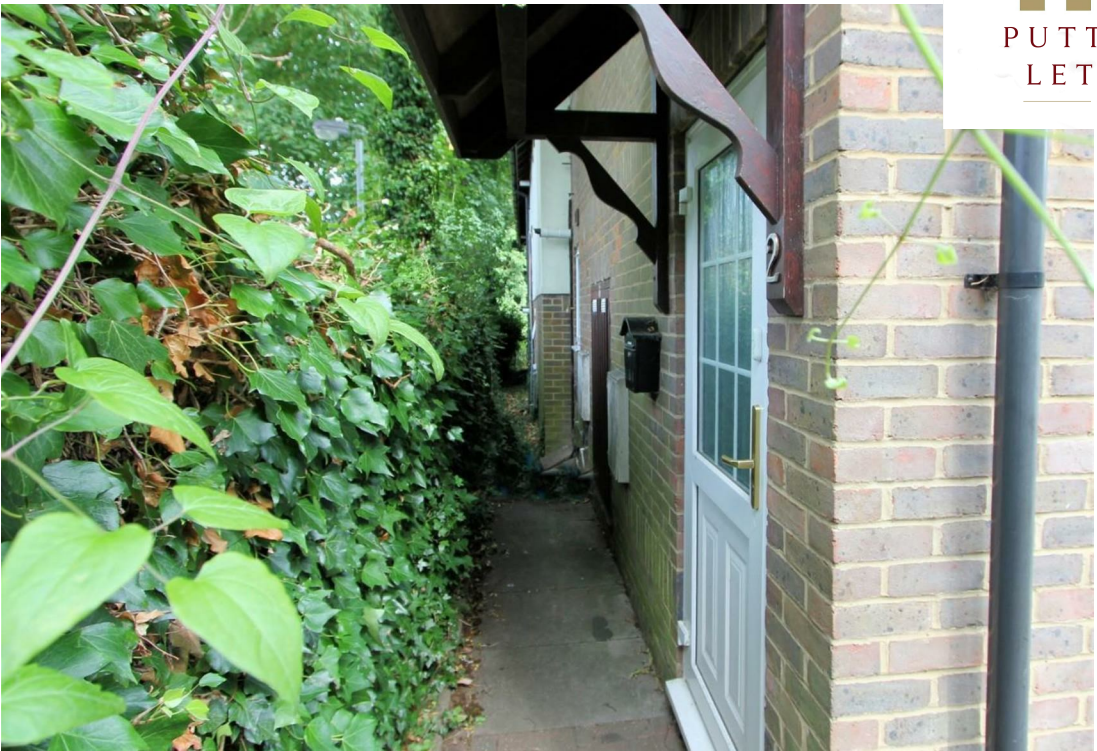


1

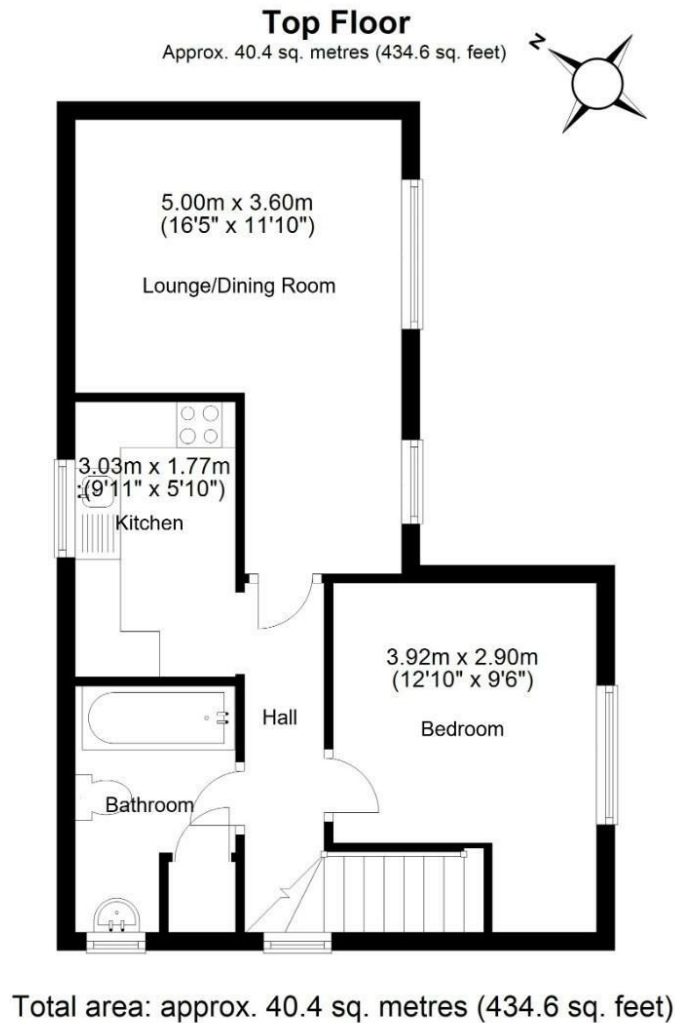


1









LOCAL AUTHORITY

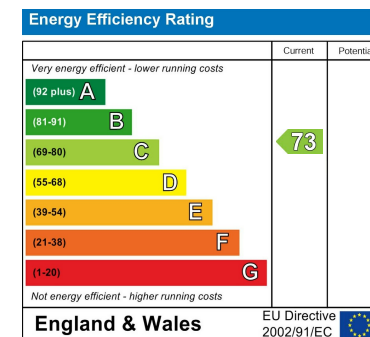
TENURE

COUNCIL TAX BAND

B

VIEWINGS

By prior appointment only



Agents Note: Whilst every care has been taken to prepare these particulars, they are for guidance purposes only. All measurements are approximate and are for general guidance purposes only and whilst every care has been taken to ensure their accuracy, they should not be relied upon and potential buyers/tenants are advised to recheck the measurements



OFFICE ADDRESS

Putterills Lettings
123 London Road
Knebworth
SG3 6EX

OFFICE DETAILS

01462 419333
lettings@putterills.co.uk
www.putterills.co.uk